

Forearm and hand muscles exhibit high coactivation and overlapping of cortical motor representations

Gabriela P. Tardelli^{a†*}, Victor Hugo Souza^{a,b,c†}, Renan H. Matsuda^a, Marco A. C. Garcia^{a,c,d}, Pavel A. Novikov^e, Maria A. Nazarova^{e,f}, Oswaldo Baffa^{a*}

^a Department of Physics, School of Philosophy, Science and Literature of Ribeirão Preto, University of São Paulo, Ribeirão Preto, Brazil

^b Department of Neuroscience and Biomedical Engineering, Aalto University School of Science, Espoo, Finland

^c Graduate Program in Rehabilitation Sciences and Functional Physical Performance, School of Physiotherapy, Federal University of Juiz de Fora, Juiz de Fora, Brazil

^d Neuro Biomechanics Group, School of Physiotherapy, Federal University of Juiz de Fora, Juiz de Fora, Brazil

^e Centre for Cognition and Decision Making, Institute for Cognitive Neuroscience, National Research University Higher School of Economics, Moscow, Russia

^f Federal State Budgetary Institution «Federal center of brain research and neurotechnologies» of the Federal Medical Biological Agency, Moscow, Russian Federation

*Corresponding author:

Gabriela Pazin Tardelli, Department of Physics, School of Philosophy Science and Literature of Ribeirão Preto, University of São Paulo, Ribeirão Preto, Brazil, email: gabriela.tardelli@usp.br

† These authors have contributed equally to this work and share the first authorship.

Acknowledgments

We are thankful to Lourenço Rocha and Carlos Renato da Silva for technical support, Dr. Pantelis Lioumis for the insightful discussions and comments on the manuscript, and Fabio Otsuka for the assistance during the experiments.

Abstract

Most of the motor mapping procedures using navigated transcranial magnetic stimulation (nTMS) follows the conventional somatotopic organization of the primary motor cortex (M1) by assessing the representation of a particular target muscle, disregarding the possible coactivation of synergistic muscles. In turn, multiple reports describe a functional organization of the M1 with an overlapping among motor representations acting together to execute movements. In this context, the overlap degree among cortical representations of synergistic hand and forearm muscles remains an open question. This study aimed to evaluate the muscle coactivation and representation overlapping common to the grasping movement and its dependence on the mapping parameters. The nTMS motor maps were obtained from one carpal muscle and two intrinsic hand muscles during rest. We quantified the overlapping motor maps in terms of the size (area and volume overlap degree) and topography (similarity and centroid's Euclidian distance) parameters. We demonstrated that these muscle representations are highly overlapped and similar in shape. The overlap degrees involving the forearm muscles were significantly higher than only among the intrinsic hand muscles. Moreover, the stimulation intensity had a stronger effect on the size compared to the topography parameters. Our study contributes to a more detailed cortical motor representation towards a synergistic, functional arrangement of M1. Understanding the muscle group coactivation may provide more accurate motor maps when delineating the eloquent brain tissue during pre-surgical planning.

Keywords

Motor mapping, Transcranial magnetic stimulation, TMS, Motor evoked potential, Neuronavigation, Synergy

1. Introduction

A fundamental debate on primary motor cortex (M1) organization is whether different body parts rely on a discrete somatotopic or functionally-specific representation on the cortical surface. In the M1, the somatotopic organization associates a cortical site to the control of a specific muscle (Schieber 2001), whereas the functional organization converges to a limb movement (Strother et al. 2012). Several studies have demonstrated that the high complexity of central movement generation can be derived from an extensive overlap and redundancy between adjacent cortical area representations (Schieber 2001; Devanne et al. 2006; Gentner and Classen 2006; Melgari et al. 2008). The overlapping areas can be related to specific movements involving more than one adjacent single joint and, therefore, a complex synergy among different muscles (Strother et al. 2012; Leo et al. 2016), which corroborates to a hypothesis of functional organization of M1. In this context, the overlap degree (OD) in the cortical representation of synergistic hand and forearm muscles remains an open question.

In navigated transcranial magnetic stimulation (nTMS), a coil placed on the scalp over M1 produces magnetic pulses that induce electric fields in the cortical tissue. The neuronal excitation results in action potentials that propagate through the corticospinal tract generating motor evoked potentials (MEP). The MEP amplitude combined with the TMS coil coordinates of the individual's brain enables one to delimit the extension and location of the motor cortical representations of the body parts (Romero et al. 2011). The nTMS mapping is widely used for delineating eloquent motor function in a preoperative setting (Lefaucheur and Picht 2016; Krieg et al. 2017). A synergistic approach to balance the functional importance of cortical sites that undergo a surgical procedure can lead to more selective cortical maps with the potential to improve patient prognostics (Frey et al. 2014; Picht et al. 2016).

A few studies claim that the overlap in cortical representation may partially represent a cortical manifestation for synergies (Pearce et al. 2000; Tyc and Boyadjian 2005; Leo et al. 2016; Huffmaster et al. 2018; Raffin and Siebner 2019). In this model, multiple muscle groups form different synergy patterns producing complex movements. To the best of our knowledge, most of the conventional motor mapping procedures assess the cortical representation of a particular target muscle (Krieg et al. 2017), disregarding the possible synergistic activation of the adjacent muscles. This coactivation of muscle groups may provide further information about how and to what degree synergistic muscles are represented at a cortical level (Leo et al. 2016).

The aim of our study was to quantify the OD between the cortical motor representation of two intrinsic hand muscles and one carpal forearm muscle in rest conditions. Using nTMS mapping, we delineated the motor representation of the selected muscles considering their synergistic activation. We hypothesized that these representations would be highly overlapped due to the muscles' extensive coactivation in several hand movements, e.g., grasping. Also, the OD would differ between adjacent and target muscles from different body parts, and would increase with the TMS intensity. Our results provide novel evidence on the functional cortical motor organization of the human brain.

2. Material and Methods

2.1. Participants

The experiment was performed with 12 right-handed (Edinburgh handedness inventory (Oldfield 1971), mean score: +75; range: +55 to +95) young male volunteers (mean age: 31.3 ± 2.5 years; range: 27–35 years). Participants were asymptomatic to neurological and/or psychiatric disorders, without recurrent headaches, and free of medication during the data collection phase. The experimental procedure followed the Declaration of Helsinki and was approved by the local ethical committee (CAAE: 54674416.9.0000.5407). Before the testing procedures, all participants signed a consent form.

2.2. Experimental procedure

Subjects underwent a magnetic resonance imaging (MRI) scan (Achieva 3T; Philips Healthcare, Netherlands) with a T1-weighted gradient-echo sequence (acquisition matrix 240x240x240, voxel size 1x1x1 mm³, 6.7 ms repetition time, and 3.1 ms echo time). The gray matter surface of the brain was segmented using SPM 12 software (Friston et al. 2006) for guiding the nTMS coil placement. Surface EMG electrodes (circular 10-mm diameter; model 2223 BRQ, 3M Brazil Ltd., Sumaré, Brazil) were placed in a pseudo-monopolar montage, with one electrode over the innervation zone and the other over the closest bone eminence (Garcia et al. 2017, 2020). The selected muscles were one right carpal forearm muscle (*flexor carpi radialis* [FCR]), and two right intrinsic hand muscles, a thenar (*flexor pollicis brevis* [FPB]) and a hypothenar muscle (*abductor digiti minimi* [ADM]). EMG data were continuously recorded from the three muscles, and digitized with the EMG 410C amplifier (gain: 2000 x, sampling frequency: 3.5 kHz per channel, band-pass 4th-order Butterworth filter: 20-500 Hz, A/D converter: 12 bits; EMG System do Brasil, São José dos Campos, Brazil).

The participants sat in a reclining chair and were instructed to stay fully relaxed with their right hand in a neutral posture during the nTMS session. TMS biphasic pulses were delivered with a figure-of-eight coil (10 cm diameter windings) connected to a Neuro-MS stimulator (Neurosoft, Ivanovo, Russia). The coil placement was guided by the neuronavigation software InVesalius Navigator (Souza et al. 2018) connected to the MicronTracker Sx60 (ClaroNav, Toronto, Canada) spatial tracker. Figure 1 depicts the experimental setup. The following procedure was applied

separately for each muscle (FCR, FPB, and ADM). First, the hotspot was defined as the coil location showing the highest MEP amplitudes with the coil tangential to the scalp and approximately perpendicular to the central sulcus (Bashir et al. 2013; Souza et al. 2017). Second, the resting motor threshold (rMT) was defined as the minimum stimulator intensity at which the MEP amplitudes were greater than 100 μ V in 5 out of 10 pulses (Nielsen 1996; Nogueira-Campos et al. 2014). A higher threshold amplitude than the usual 50 μ V (Conforto et al. 2004) was selected to provide stable MEP measurements desired when using a relatively small number of trials per stimulation site during motor mapping (Pellegrini et al. 2018).

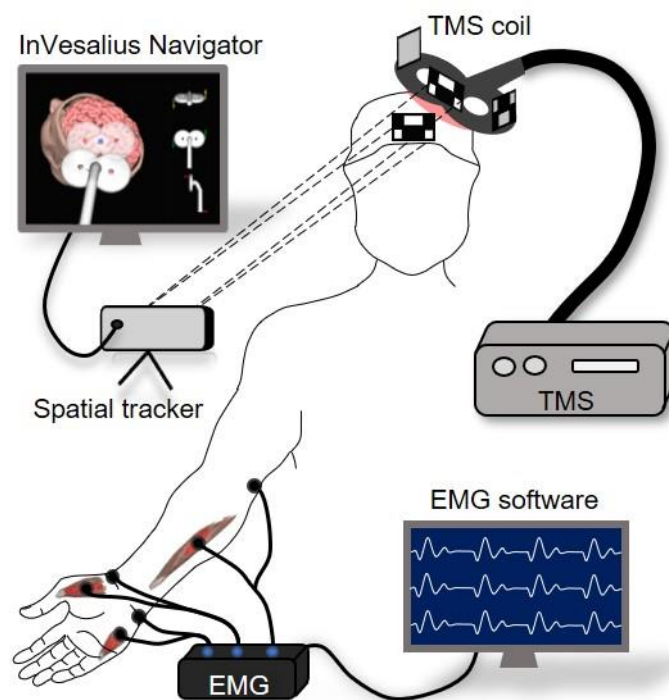


Fig. 1 Schematic representation of the experimental setup. The surface EMG electrodes were attached to the hand and forearm muscles. Electrodes were placed in a pseudo-monopolar montage with one electrode over the muscle's innervation zone and the other over the closest bone eminence. The TMS coil was positioned over M1 on the left hemisphere and the stimulation was guided by the neuronavigation software

Motor mapping was performed following the pseudo-random walk method with three consecutive TMS pulses in each of the 20 sites around the target muscle's hotspot (Van De Ruit et al. 2015; Cavaleri et al. 2018; Jonker et al. 2018). The distance between adjacent stimulation sites was approximately 14.5 ± 3.6 mm, and interpulse intervals were pseudo-randomized between 5 and 10 s. EMG signal was recorded from the three muscles simultaneously, and the coordinates of the coil center were recorded with the neuronavigation software. The EMG and the neuronavigation software were synchronized by a trigger signal. The target muscle was defined as the one whose stimulation intensity was set relative to its rMT, and the stimuli were delivered over a region centered at the hotspot. The remaining muscles were defined as adjacent. The experiment was repeated for each target muscle (ADM, FCR, and FPB) and with stimulation intensities of 110% and 120% of the rMT, scaled according to the maximum stimulator output (MSO).

2.3. Motor map processing

The EMG signals were processed using the Signal Hunter software (<https://doi.org/10.5281/zenodo.1326308>) written in Matlab R2017a (MathWorks Inc., Natick, USA). The peak-to-peak amplitude was computed for MEPs extracted from the EMG signal in a time window 10–60 ms after the TMS pulse. The EMG signal was visually inspected, and trials with muscle pre-activation, artifacts, or noise over $\pm 20 \mu\text{V}$ up to 300 ms before the TMS pulse in amplitude were rejected. The coil center coordinates obtained from InVesalius Navigator were imported into Signal Hunter and aligned to the corresponding MEP amplitude and the latency of the three muscles. One participant was removed from the data analysis due to technical problems in the TMS–EMG synchronization.

The cortical motor maps were created in the TMSmap software (Novikov et al. 2018) with the individuals' MRI, stimulation coordinates, and the correspondent MEP amplitudes. The software creates the maps with the mean coordinates and the median peak-to-peak MEP amplitudes of the merged closely spaced coordinates. The technical details of the map processing steps performed in the TMSmap software are described in Appendix 1. For each target muscle, we constructed two overlaps: the target with each of the adjacent muscles (two maps) and the target with both adjacent muscles together (three maps). The area, volume, and centroid were computed for all maps from each subject and stimulation intensity. The area represents the extent of the cortical motor representation, and the volume represents the area weighted by the motor response amplitude. To quantify the topographic similarity between two (or three) maps, we computed the Earth's movers distance (EMD), which estimates the work required to move one spatial distribution to another (Rubner et al. 1998). The Euclidean distance between the target muscle and the overlap map centroids of the corresponding target and its adjacent muscles was computed to evaluate differences in the spatial distribution of the muscle of interest when overlapped with another map. We defined the EMD and the Euclidean distance as topography parameters.

To evaluate the coactivation between the muscle representations, we defined the size parameters as area and volume OD. The OD was computed as the percentage of the area (or volume) that evoked two or three muscles relative to the total area (or volume) that evoked at least one of the assessed muscles similarly to the earlier studies (Melgari et al. 2008; Nazarova et al. 2021):

$$X_{\text{OD-2 muscles}} = \frac{X_{12} \cdot 100\%}{X_1 + X_2 - X_{12}} \quad (1)$$

Where X can be area or volume, and the indices 1, 2, and 3 (equation below) refer to each of the muscle maps (target and adjacent) and their corresponding overlaps (pairs of indices). The OD was categorized as: 0-20% (negligible); 21-40% (low); 41-60% (medium); 61-80% (high); 81-100% (very high). The relative number of subjects with OD in each of these categories was calculated for all overlap maps. Similarly, the OD of three muscle motor maps were computed as:

$$X_{\text{OD-3 muscles}} = \frac{X_{123} \cdot 100\%}{X_1 + X_2 + X_3 - (X_{12} + X_{13} + X_{23}) + X_{123}} \quad (2)$$

2.4. Statistical analysis

All parameters were normalized relative to their maximum values within each individual to enable a direct comparison between conditions and subjects. The stimulation intensity, target, and adjacent muscle, and each map parameter (area and volume OD, EMD, and the centroid

Euclidean distance) were modeled as fixed effects. In turn, the subjects were modeled as a random effect in a linear mixed-effects model. A random structure of the model was selected, based on hierarchical sequential testing, with each model fit using likelihood-ratio tests. The selected model was recomputed using restricted maximum likelihood estimation and the p-values for fixed effects derived with Satterthwaite approximations in a Type III Analysis of Variance table. The rMT across subjects (random) and muscles (fixed) were also analyzed using a linear mixed-effects model. When appropriate, post-hoc multiple comparisons were performed with estimated marginal means with p-value correction for the false discovery rate. Critical deviations from normality were assessed with Q-Q plots of the residuals and homoscedasticity was inspected with a standard versus fitted values plot. Statistical analysis was performed in R 3.6 (R Core Team, Vienna, Austria) using the *lme4* 1.1, *afex* 0.25 packages, and *emmeans* 1.4 packages. The level of statistical significance was set at 0.05.

3. Results

3.1. Overlap degree and rMT

The rMT varied across muscles and within subjects, being higher for the FCR compared to the FPB muscle. We computed nine overlap maps for each subject: six overlap maps of two muscles and three of three muscles. The subscript [*tg*] refers to the target and [*adj*] to the adjacent muscles. The relative number of subjects for each OD category is illustrated in Figure 2. More than 60% of the subjects had medium to very high area OD but negligible to low volume OD. Maps of two muscles had more subjects with higher ODs than those of three muscles at both stimulation intensities. The number of subjects with high area OD of all maps was higher at 120% than at 110% rMT stimulation intensity.

3.2. The effect of stimulation intensity, target and adjacent muscle on map size and topography

Table 1 presents the results of the linear mixed-effects model. The size parameters (area and volume OD) were significantly affected by the stimulation intensity, the target, and adjacent muscle. In turn, the topography parameters (EMD and the centroid Euclidean distance) were significantly affected only by the adjacent muscle but not by the stimulation intensity nor the target muscle.

The multiple comparisons are presented in the Supplementary Tables S1-S3, and the means and standard deviations across subjects for each parameter of all overlap maps area are illustrated in Figure 3. For most overlaps, the area OD was significantly higher at 120% than at 110% rMT of stimulation intensity. The effect of intensity was only significant at the volume OD factor level, whereas none of the multiple comparisons displayed any significant differences. When comparing different target or adjacent muscles, the highest area and volume ODs were between ADM and FRC. At the same time, overlaps involving FPB did not show any significant differences when compared to the overlap between the three muscles together. This result applies to both stimulation intensities in most cases. Lastly, the EMD and centroid Euclidean distance were similar for both tested stimulation intensities and all comparisons across adjacent and target muscles.

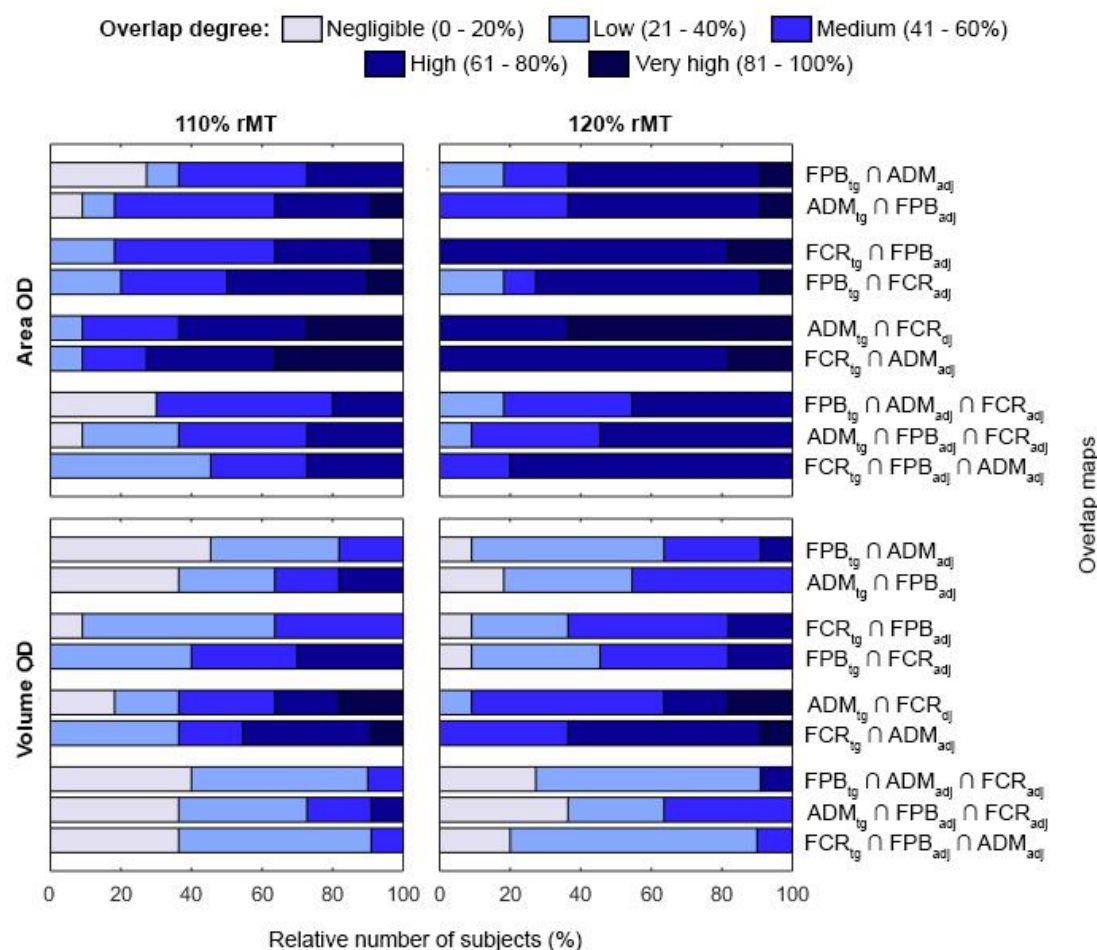


Fig. 2 Relative number of subjects with OD distributed in 5 categories (negligible, low, medium, high and very high) for all overlap maps and at stimulation intensities of 110% (left) and 120% (right) of rMT. The relative number of subjects with each OD is indicated by the length of the horizontal bars, and the \cap (intersection) symbol represents the overlap between muscles

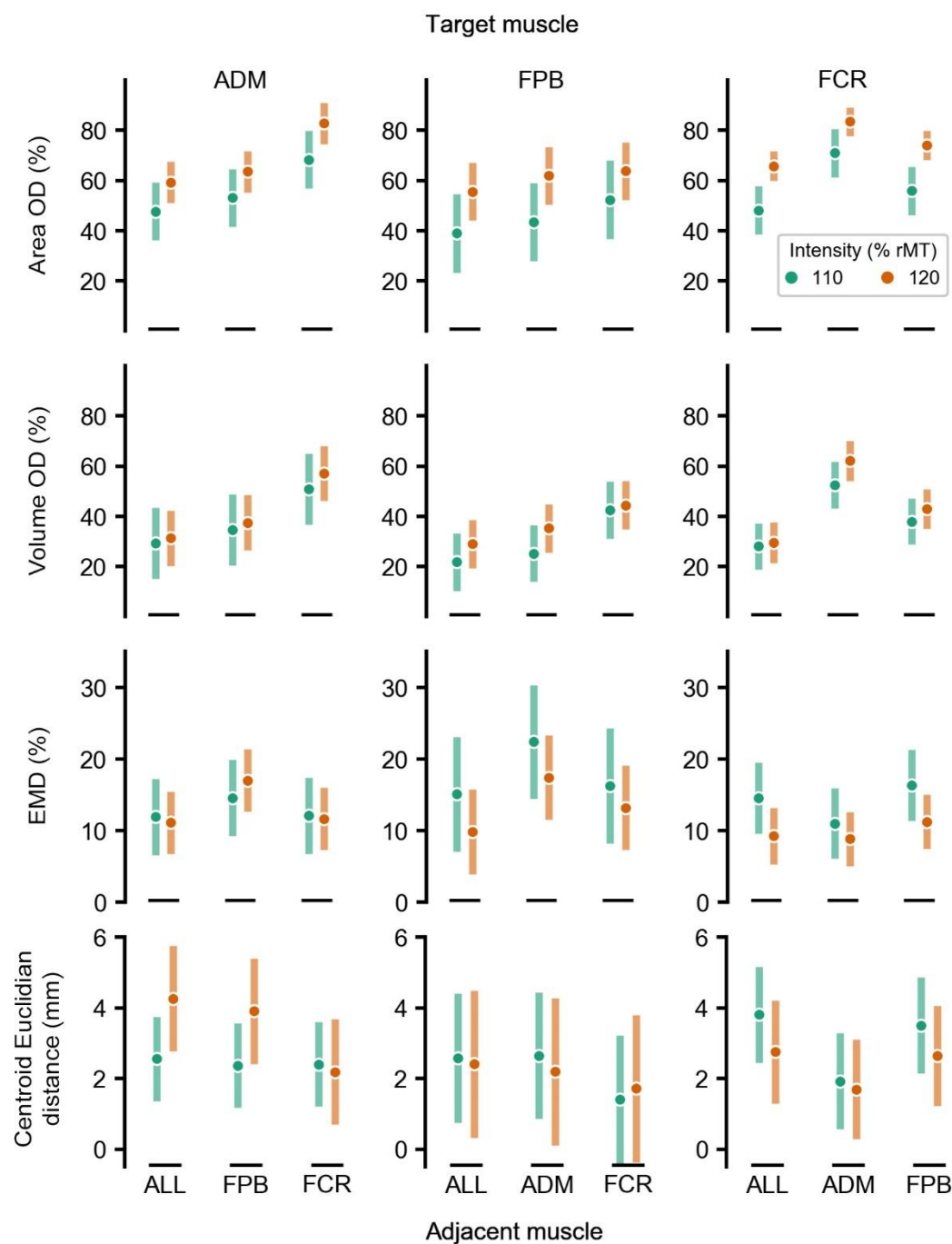


Fig. 3 Mean and standard deviation of the motor maps' size and topography parameters across the 11 subjects. The rows and columns of the chart grid contain the map parameters and the target muscle, respectively. The green and orange colors represent 110% and 120% of the rMT stimulation intensity. The term ALL refers to the overlap of the target with both adjacent muscles simultaneously

Table 1 The linear mixed-effects model results for size and topography parameters. Abbreviations: stimulation intensity (SI), target (M_{tg}), and adjacent muscle (M_{adj}) * indicates P-value < 0.05

Effect	Degrees-of-freedom (numerator, denominator)	F-value	P-value	Degrees-of-freedom (numerator, denominator)	F-value	P-value
Area OD				Volume OD		
SI	(1, 10.0)	19.99	0.001*	(1, 9.96)	5.85	0.036*
M_{tg}	(2, 10.7)	8.61	0.006*	(2, 10.9)	11.82	0.002*
M_{adj}	(3, 137.4)	45.77	<0.001*	(3, 136.0)	70.35	<0.001*
SI x M_{tg}	(2, 137.9)	0.82	0.444	(2, 136.6)	0.06	0.945
SI x M_{adj}	(3, 137.4)	0.09	0.964	(3, 135.9)	1.11	0.348
M_{tg} x M_{adj}	(3, 137.4)	7.02	<0.001*	(3, 136.0)	13.01	0.000*
SI x M_{tg} x M_{adj}	(3, 137.5)	1.30	0.276	(3, 136.0)	0.70	0.553
Centroid Euclidean distance				EMD		
SI	(1, 11.0)	0.02	0.890	(1, 10.1)	1.65	0.228
M_{tg}	(2, 11.1)	0.39	0.688	(2, 14.5)	2.76	0.096
M_{adj}	(3, 146.9)	4.49	0.005*	(3, 147.5)	5.57	0.001*
SI x M_{tg}	(2, 147.1)	4.06	0.019*	(2, 147.9)	3.16	0.045*
SI x M_{adj}	(3, 146.9)	0.31	0.819	(3, 147.4)	0.28	0.836
M_{tg} x M_{adj}	(3, 146.9)	1.32	0.270	(3, 147.5)	4.82	0.003*
SI x M_{tg} x M_{adj}	(3, 146.9)	1.41	0.241	(3, 147.6)	0.55	0.646

4. Discussion

In this study, we demonstrated that the motor map parameters varied significantly between the pairs of muscles in size (area and volume) but not in topography (EMD and centroid Euclidean distance). While area OD of the muscle's pairs was mainly medium to very high, volume OD was negligible to low. Our results also showed that increasing the stimulation intensity from 110% to 120% of the rMT causes a significant increase in the area OD among different muscles. In turn, changing the stimulation intensity did not affect the maps' topographies. We did not observe a clear indication of whether the volume OD changed with the increase of the stimulus intensity, possibly due to variations in the OD between subjects and among the muscles.

4.1. The effect of TMS intensity on the map's parameters

A stimulation intensity of 120% of rMT resulted in larger representation areas of the target and adjacent muscles, corroborating previous findings (Thordstein et al. 2013; Julkunen 2014; Kallioniemi and Julkunen 2016; van de Ruit and Grey 2016). The increase in the OD is due to a higher spatial overlap between the two cortical maps than in the total area encompassed by two (or three) maps individually, as illustrated in Figure 4. Regardless of the higher overlap, the spatial distributions remain similar, and the most excitable regions of the cortex for a particular muscle seem to stay the same. Our results align with a previous study showing that an increase in stimulation intensity changes the extension of the motor representation but keeps similar topographies and centroids (van de Ruit and Grey 2016).

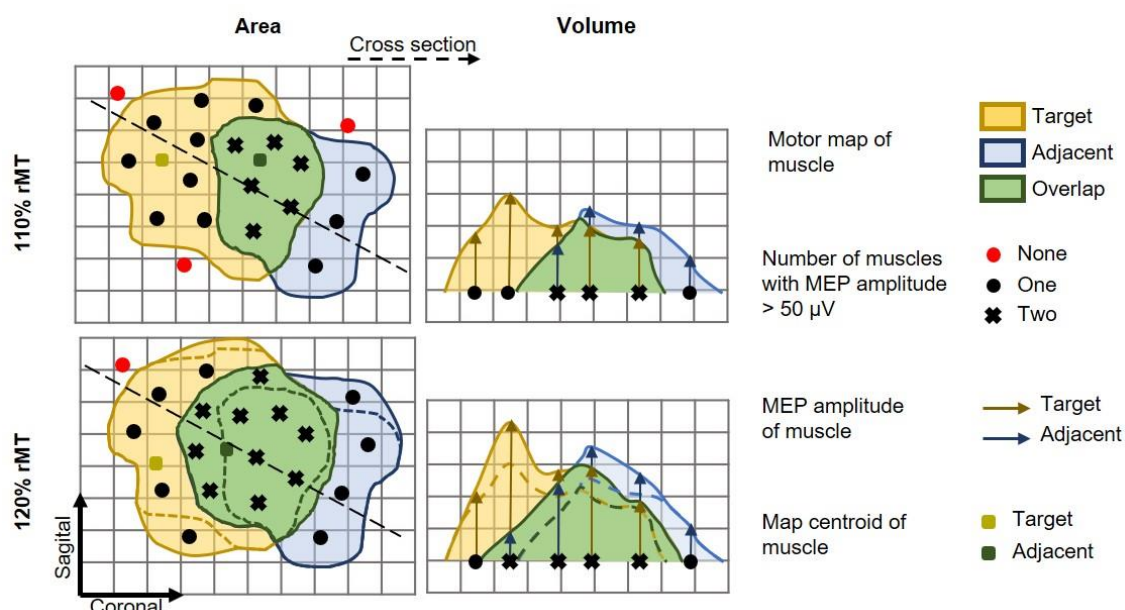


Fig. 4 Effect of the stimulation intensity on the individual and overlap maps. In the left panel, the motor map area, and on the right, a cross-section of the area to represent the map's height profile (MEP amplitude). Note that, at a higher stimulation intensity (120% rMT), there is a higher number stimulation sites resulting in MEP amplitudes greater than 50 μ V (black markers) from one (circle) to two (cross) muscles was pronounced than the increase from none to one muscle. Thus, even though all maps (target and adjacent muscle and overlap) showed an increase in area, the overlap map increased more than the total map

Lower stimulation intensities resulted in a motor representation with more restricted sites of muscle activation than higher intensities, as depicted in Figure 5. One likely interpretation is that the weaker intensity might not recruit the less excitable neuronal populations (Kallioniemi and Julkunen 2016). When studying the functional overlapping of muscles with different motor thresholds, one might observe that M1 is organized by discrete or slightly overlapping representations. In each M1 representation site, the target muscle can be overlapped with different adjacent muscles that may be related to distinct synergies and, therefore, contribute to various movements. This association might point towards the functional organization of M1 (Massé-Alarie et al. 2017).

In turn, higher stimulation intensities are associated with stronger magnetic fields spanning a larger cortical region (van de Ruit and Grey 2016) and reflect in smoother motor maps that may lead to two outcomes. First, the higher intensity may excite neuronal populations located further from the region of interest, recruited indirectly from the excitation of intracortical neurons (Schieber 2001; Nieminen et al. 2019). This stimulation leakage may overestimate the muscle representations and the region-of-interest muscle representation overlap, losing the specificity of the studied movement. Secondly, the higher intensity may delineate the full extent of the muscles' motor representation, providing a complete picture of the muscle group coactivation. In summary, coactivation maps obtained from both lower and higher stimulation intensities might provide complementary perspectives on the M1's functional organization. The stimulation intensity needs to be carefully chosen to account for the synergy when mapping the representation of different muscles, especially in pre-surgical applications where the mapping methods must be the most accurate possible (Krieg et al. 2017).

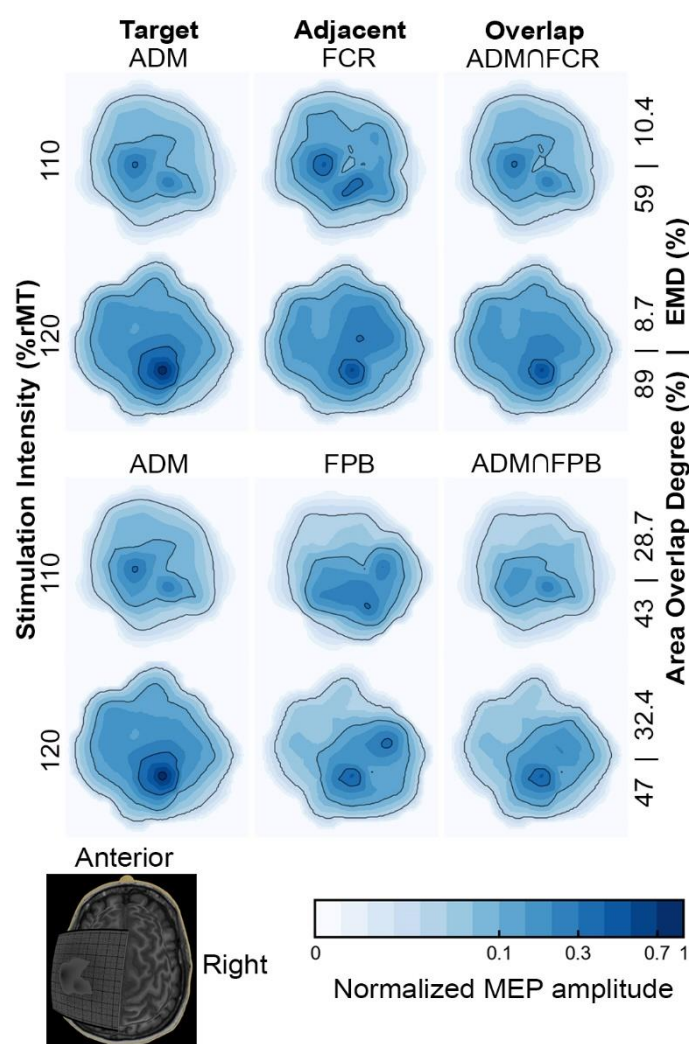


Fig. 5 Normalized motor maps of a representative subject with low and high area and topographic similarity, and MEP amplitude affected by a higher TMS intensity. The contour line indicates the 5, 30, and 70% of the maximal MEP amplitude. Note that the map size and the area OD, but not the EMD, is significantly higher at 120% than in 110% of rMT. In addition, the increase in the area OD is greater when the EMD is lower, i.e., when the maps of the target and adjacent muscles have a more remarkable similarity. The \cap (intersection) symbol represents the overlap between muscles

4.2. The cortical representation overlapping of a carpal and intrinsic hand muscles

We observed a higher overlapping between the forearm (FCR) and both intrinsic hand muscles (ADM or FPB) than between the intrinsic themselves. In addition, the centroids of the hand muscle representations are further away than those between the forearm and hand muscles. In contrast, a previous study observed higher levels of overlapping among the representations of intrinsic hand muscles when compared to those obtained between them and the carpal forearm muscles (Melgari et al. 2008; Nazarova et al. 2021). This difference is possibly because the subjects in our study kept their hands in a neutral posture, offering distinct proprioceptive feedback from that generated in maintaining the pronated posture (Graziano 2006), as adopted in the study by Melgari et al. (2008). The hand posture is implicitly related to grasping and the corresponding body movements (Perez and Rothwell 2015). The influence of the hand posture on overlapping was previously associated with a dynamic modification in the neuronal network structure related to motor control (Melgari et al. 2008; Perez and Rothwell 2015; Raffin and

Siebner 2019). Furthermore, the higher rMT of the forearm compared to the hand muscles may contribute to the observed higher overlap, while the low rMT of FPB may only partially stimulate adjacent muscles with higher rMT. In this sense, our results suggest that different muscles have cortical areas preferentially shared with specific muscles, as depicted in Figure 6.

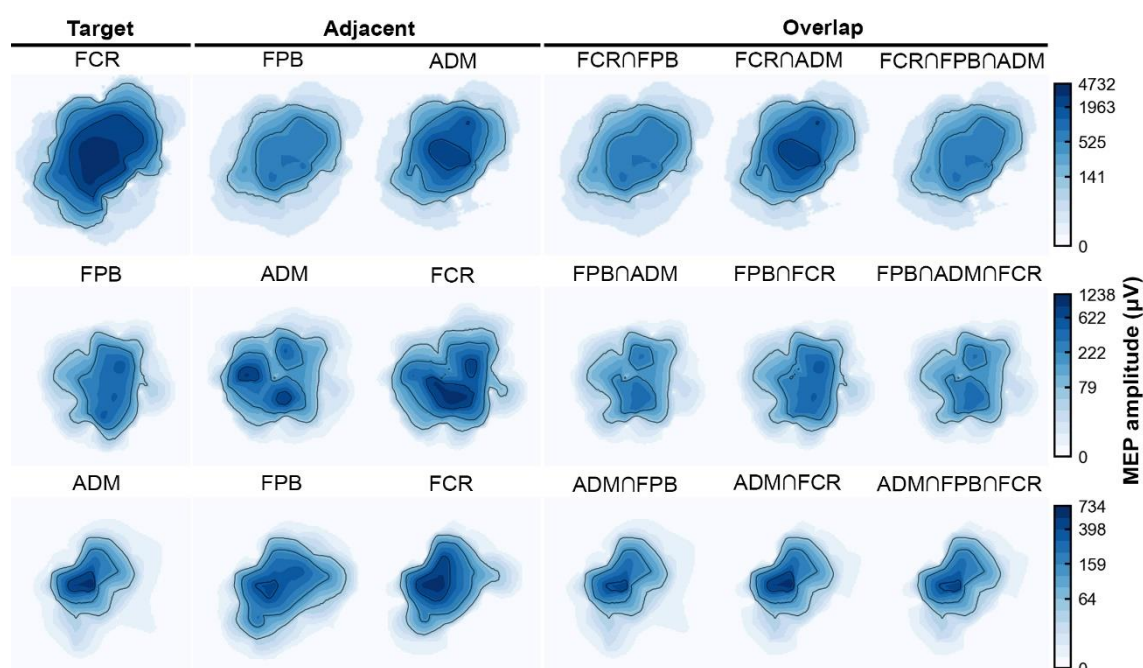


Fig. 6 Motor maps of a representative subject at a stimulation intensity of 120% rMT, comparing topography, size, and MEP amplitudes of all possible combinations of ADM, FPB, and FCR muscle maps. The map's anatomical references are the same as in Figure 4. The \cap (intersection) symbol represents the overlap between muscles

We associate the high overlap in motor representations of upper limb muscles to a functionally organized M1 hypothesis. Our view is in agreement with previous studies that investigated the organization pattern of M1 through the nTMS motor overlapping (Wassermann et al. 1992; Wilson et al. 1993; Marconi et al. 2007; Melgari et al. 2008; Nazarova et al. 2021), and functional MRI in humans (Indovina and Sanes 2001; Leo et al. 2016). As we expected, our results revealed that the OD was smaller but still significant when both hand and forearm muscles were overlapped. This may indicate that the more motor representations are overlapped, smaller the overlap degrees and greater the specificity of the synergies. Despite the highly overlapped representations, we have not focused on whether it reflects the ability to perform fine movements, as previous studies interpreted as indications of functional reorganization of M1 (Pearce et al. 2000; Tyc and Boyadjian 2005). However, this factor could be associated with different OD among subjects and may be tested in the future through parallel behavioral approaches.

The substantial overlapping is possibly explained by how the M1 seems to encode movements and muscle recruitment. Individual muscles appear to be recruited by a complex neuronal network instead of an individualized set of neurons, connected by a set of synergies responsible for a wide range of movements and tasks (Gentner and Classen 2006; Leo et al. 2016). Such motor representation is given by groups of functionally related neurons (Klochkov and Khizhnikova 2018) following two possible mechanisms: convergence and divergence. In the convergence mechanism, a muscle has its motor representation on separate sites over M1, i.e.,

each site is probably overlapped with the motor representation of different groups of muscles and, thus, associated with different movements (Schieber 2001; Massé-Alarie et al. 2017). In the divergence mechanism, one site can elicit several muscles simultaneously with different intensities according to their performed movement (Schieber 2001; Melgari et al. 2008).

The divergence mechanism is observed through connections between specific pyramidal neurons and motoneurons that innervate different muscles (Schieber 2001). Such a phenomenon could be related to the shared innervation between FPB with both ADM and FCR. The FPB is a hypothenar muscle composed of a superficial and a deep head that have different innervations. The deep head of the FPB is innervated by the ulnar nerve, the same innervation of the ADM. The superficial head of the FPB has the same innervation as the FCR, the median nerve (Vishram 2014). It possibly relates to the OD in the cortical representation. The action potential generated in the cortical site associated with the FPB propagates through similar pathways, resulting in a simultaneous contraction of the muscles with shared innervations. Therefore, the significant area OD probably resulted from the divergence of the overlapping motor representation indicating the synergism between the studied muscles. Such a view is further supported by animal studies. For instance, cortical motor neurons in cats have been shown to be connected to neurons of multiple muscles, not as the expected point-to-point connectivity, resulting in action potentials that can influence any cortical site within the innervation path, allowing synergic interactions between specific cortical sites that will lead to several movements (Capaday et al. 2009).

4.3. Methodological considerations

Despite the evident extension of the overlapping representation of muscles on M1, the focality of the TMS is challenging to estimate, and stimulation can propagate over regions responsible for adjacent muscles that can contribute to a high OD (Schieber 2001; Fricke et al. 2017). However, simple models based on the coil's center projection, like the one used in this experiment, have more than 85% accuracy and can be used to delineate the cortical motor representation but the stimulus propagation in the realistic cortical geometry is still disregarded (Seynaeve et al. 2019).

It is important to note that we used 100 μ V MEP amplitude as a reference to estimate the rMT. The 110% and 120% of rMT stimulation intensities may correspond to slightly higher stimulator outputs when compared to protocols using 50 μ V MEP amplitude. Nonetheless, our key results are the changes in motor map parameters and overlaps relative to the increase in the stimulation, which are likely to occur regardless of the small deviation from the stimulator output. Moreover, the adopted protocol ensured consistent MEPs for a relatively small number of trials in each location coil location during the motor mapping procedure. We should note that, only one set of muscles linked to the manual grasp movement was assessed. Our results may not generalize to muscle groups with different movement refinement, such as the lower limbs. Even so, we provide an important systemic perspective on how to evaluate the cortical motor representation.

5. Conclusion

We aimed at understanding the cortical motor organization of three muscles linked to the grasping movement. Our results showed a higher cortical representation overlapping between the carpal forearm and both intrinsic hand muscles than between the intrinsic themselves. Stronger stimulation intensities led to higher overlap in the map areas but did not affect the volume and the map topographies. Our study contributes to a more detailed representation of the motor cortex associated with the functional arrangement among muscles, implying a

synergistic spatial organization. Understanding the coactivation of muscle groups may provide accurate functional maps over M1. Finally, spatially accurate cortical motor mapping with nTMS can have an immediate clinical impact, for instance, when defining the eloquent brain tissue during pre-surgical planning. Avoiding highly overlapped areas that could be associated with muscular synergy would minimize deficits in the patients' motor function (Tharin and Golby 2007; Lefaucheur and Picht 2016).

6. References

- Bashir S, Perez JM, Horvath JC, Pascual-Leone A (2013) Differentiation of Motor Cortical Representation of Hand Muscles by Navigated Mapping of Optimal TMS Current Directions in Healthy Subjects. *J Clin Neurophysiol* 30:390–395. <https://doi.org/10.1097/WNP.0b013e31829dda6b>
- Capaday C, Ethier C, Brizzi L, et al (2009) On the nature of the intrinsic connectivity of the cat motor cortex: Evidence for a recurrent neural network topology. *J Neurophysiol* 102:2131–2141. <https://doi.org/10.1152/jn.91319.2008>
- Cavaleri R, Schabrun SM, Chipchase LS (2018) The reliability and validity of rapid transcranial magnetic stimulation mapping. *Brain Stimul* 11:1291–1295. <https://doi.org/10.1016/j.brs.2018.07.043>
- Conforto AB, Z'Graggen WJ, Kohl AS, et al (2004) Impact of coil position and electrophysiological monitoring on determination of motor thresholds to transcranial magnetic stimulation. *Clin Neurophysiol* 115:812–819. <https://doi.org/10.1016/j.clinph.2003.11.010>
- Devanne H, Cassim F, Ethier C, et al (2006) The comparable size and overlapping nature of upper limb distal and proximal muscle representations in the human motor cortex. *Eur J Neurosci* 23:2467–2476. <https://doi.org/10.1111/j.1460-9568.2006.04760.x>
- Frey D, Schilt S, Strack V, et al (2014) Navigated transcranial magnetic stimulation improves the treatment outcome in patients with brain tumors in motor eloquent locations. *Neuro Oncol* 16:1365–1372. <https://doi.org/10.1093/neuonc/nou110>
- Fricke C, Gentner R, Rumpf JJ, et al (2017) Differential spatial representation of precision and power grasps in the human motor system. *Neuroimage* 158:58–69. <https://doi.org/10.1016/j.neuroimage.2017.06.080>
- Friston K, Ashburner J, Kiebel S, et al (2006) *Statistical Parametric Mapping: The Analysis of Functional Brain Images*, 1st Editio. Academic Press
- Garcia MAC, Souza VH, Lindolfo-Almas J, et al (2020) Motor potential evoked by transcranial magnetic stimulation depends on the placement protocol of recording electrodes: A pilot study. *Biomed Phys Eng Express* 6:047003. <https://doi.org/10.1088/2057-1976/ab950a>
- Garcia MAC, Souza VH, Vargas CD (2017) Can the Recording of Motor Potentials Evoked by Transcranial Magnetic Stimulation Be Optimized? *Front Hum Neurosci* 11:1–4. <https://doi.org/10.3389/fnhum.2017.00413>
- Gentner R, Classen J (2006) Modular Organization of Finger Movements by the Human Central Nervous System. *Neuron* 52:731–742. <https://doi.org/10.1016/j.neuron.2006.09.038>
- Graziano M (2006) The Organization of Behavioral Repertoire in Motor Cortex. *Annu Rev Neurosci* 29:105–134. <https://doi.org/10.1146/annurev.neuro.29.051605.112924>
- Groppa S, Oliviero A, Eisen A, et al (2012) A practical guide to diagnostic transcranial magnetic

- stimulation: Report of an IFCN committee. Clin Neurophysiol 123:858–882.
<https://doi.org/10.1016/j.clinph.2012.01.010>
- Huffmaster XSLA, Iii GMVA, Luchies CW, Cheney XD (2018) Muscle Synergies Obtained from Comprehensive Mapping of the Cortical Forelimb Representation Using Stimulus Triggered Averaging of EMG Activity. J Neurosci 38:8759–8771.
<https://doi.org/10.1523/JNEUROSCI.2519-17.2018>
- Indovina I, Sanes JN (2001) On somatotopic representation centers for finger movements in human primary motor cortex and supplementary motor area. Neuroimage 13:1027–1034. <https://doi.org/10.1006/nimg.2001.0776>
- Jonker ZD, Vliet R Van Der, Hauwert CM, et al (2018) TMS motor mapping: Comparing the absolute reliability of digital reconstruction methods to the golden standard. Brain Stimul 12:309–313. <https://doi.org/10.1016/j.brs.2018.11.005>
- Julkunen P (2014) Methods for estimating cortical motor representation size and location in navigated transcranial magnetic stimulation. J Neurosci Methods 232:125–133.
<https://doi.org/10.1016/j.jneumeth.2014.05.020>
- Kallioniemi E, Julkunen P (2016) Alternative Stimulation Intensities for Mapping Cortical Motor Area with Navigated TMS. Brain Topogr 29:395–404. <https://doi.org/10.1007/s10548-016-0470-x>
- Klochkov AS, Khizhnikova AE (2018) Pathological Upper Limb Synergies of Patients with Poststroke Hemiparesis. Neurosci Behav Physiol 48:. <https://doi.org/10.1007/s11055-018-0634-0>
- Krieg SM, Lioumis P, Mäkelä JP, et al (2017) Protocol for motor and language mapping by navigated TMS in patients and healthy volunteers; workshop report. Acta Neurochir (Wien) 159:1187–1195. <https://doi.org/10.1007/s00701-017-3187-z>
- Lefaucheur JP, Picht T (2016) The value of preoperative functional cortical mapping using navigated TMS. Neurophysiol Clin 46:125–133.
<https://doi.org/10.1016/j.neucli.2016.05.001>
- Leo A, Handjaras G, Bianchi M, et al (2016) A synergy-based hand control is encoded in human motor cortical areas. Elife 5:e13420. <https://doi.org/10.7554/eLife.13420>
- Marconi B, Pecchioli C, Koch G, Caltagirone C (2007) Functional overlap between hand and forearm motor cortical representations during motor cognitive tasks. Clin Neurophysiol 118:1767–1775. <https://doi.org/10.1016/j.clinph.2007.04.028>
- Massé-Alarie H, Bergin MJG, Schneider C, et al (2017) “Discrete peaks” of excitability and map overlap reveal task-specific organization of primary motor cortex for control of human forearm muscles. Hum Brain Mapp 38:6118–6132. <https://doi.org/10.1002/hbm.23816>
- Melgari J, Pasqualetti P, Pauri F, Rossini PM (2008) Muscles in “Concert”: Study of Primary Motor Cortex Upper Limb Functional Topography. PLoS One 3:e3069.
<https://doi.org/10.1371/journal.pone.0003069>
- Nazarova M, Novikov P, Ivanina E, et al (2021) Mapping of multiple muscles with transcranial magnetic stimulation: absolute and relative test–retest reliability. Hum Brain Mapp 42:1–21. <https://doi.org/10.1002/hbm.25383>
- Nielsen JF (1996) Logarithmic distribution of amplitudes of compound muscle action potentials evoked by transcranial magnetic stimulation. J Clin Neurophysiol 13:423–434.

<https://doi.org/10.1097/00004691-199609000-00005>

- Nieminen JO, Koponen LM, Ilmoniemi RJ (2015) Experimental Characterization of the Electric Field Distribution Induced by TMS Devices. *Brain Stimul* 8:582–589. <https://doi.org/10.1016/j.brs.2015.01.004>
- Nieminen JO, Koponen LM, Mäkelä N, et al (2019) Short-interval intracortical inhibition in human primary motor cortex: A multi-locus transcranial magnetic stimulation study. *Neuroimage* 203:116194. <https://doi.org/10.1016/j.neuroimage.2019.116194>
- Nogueira-Campos AA, Oliveira LAS de, Della-Maggiore V, et al (2014) Corticospinal Excitability Preceding the Grasping of Emotion-Laden Stimuli. *PLoS One* 9:e94824. <https://doi.org/10.1371/journal.pone.0094824>
- Novikov PA, Nazarova MA, Nikulin V V. (2018) TMSmap – Software for Quantitative Analysis of TMS Mapping Results. *Front Hum Neurosci* 12:239. <https://doi.org/10.3389/fnhum.2018.00239>
- Pearce A, Thickbroom GW, Byrnes ML, Mastaglia FL (2000) Functional Organisation of the Corticomotor Projection to the Hand in Skilled Functional reorganisation of the corticomotor projection to the hand in skilled racquet players. *Exp Brain Res* 130:238–243. <https://doi.org/10.1007/s002219900236>
- Pellegrini M, Zoghi M, Jaberzadeh S (2018) The effect of transcranial magnetic stimulation test intensity on the amplitude, variability and reliability of motor evoked potentials. *Brain Res* 1700:190–198. <https://doi.org/10.1016/j.brainres.2018.09.002>
- Perez MA, Rothwell JC (2015) Distinct influence of hand posture on cortical activity during human grasping. *J Neurosci* 35:4882–4889. <https://doi.org/10.1523/JNEUROSCI.4170-14.2015>
- Picht T, Frey D, Thieme S, et al (2016) Presurgical navigated TMS motor cortex mapping improves outcome in glioblastoma surgery: a controlled observational study. *J Neurooncol* 126:535–543. <https://doi.org/10.1007/s11060-015-1993-9>
- Raffin E, Siebner HR (2019) Use-Dependent Plasticity in Human Primary Motor Hand Area : Synergistic Interplay Between Training and Immobilization. *Cereb Cortex* 29:356–371. <https://doi.org/10.1093/cercor/bhy226>
- Romero JR, Ramirez DM, Aglio LS, Gugino LD (2011) Brain mapping using transcranial magnetic stimulation. *Neurosurg Clin N Am* 22:141–152. <https://doi.org/10.1016/j.nec.2010.11.002>
- Rubner Y, Tomasi C, Guibas LJ (1998) The Earth Mover’s Distance as a Metric for Image Retrieval. *Int J Comput Vis* 40:99–121. <https://doi.org/https://doi.org/10.1023/A:1026543900054>
- Schieber MH (2001) Constraints on somatotopic organization in the primary motor cortex. *J Neurophysiol* 86:2125–2143. <https://doi.org/10.1152/jn.2001.86.5.2125>
- Seynaeve L, Haeck T, Gramer M, et al (2019) Optimized preoperative motor cortex mapping in brain tumors using advanced processing of transcranial magnetic stimulation data. *NeuroImage Clin* 21:101657 Contents. <https://doi.org/10.1016/j.nicl.2019.101657>
- Souza VH, Matsuda RH, Peres ASC, et al (2018) Development and characterization of the InVesalius Navigator software for navigated transcranial magnetic stimulation. *J Neurosci Methods* 309:109–120. <https://doi.org/10.1016/j.jneumeth.2018.08.023>
- Souza VH, Vieira TM, Peres ASC, et al (2017) Effect of TMS coil orientation on the spatial

distribution of motor evoked potentials in an intrinsic hand muscle. *Biomed Eng / Biomed Tech* 63:635–645. <https://doi.org/10.1515/bmt-2016-0240>

Strother L, Medendorp WP, Coros AM, Vilis T (2012) Double representation of the wrist and elbow in human motor cortex. *Eur J Neurosci* 36:3291–3298. <https://doi.org/10.1111/j.1460-9568.2012.08241.x>

Tharin S, Golby A (2007) Functional brain mapping and its applications to neurosurgery. *Neurosurgery* 60:185–202. <https://doi.org/10.1227/01.NEU.0000255386.95464.52>

Thordstein M, Saar K, Pegenius G, Elam M (2013) Individual effects of varying stimulation intensity and response criteria on area of activation for different muscles in humans . A study using navigated transcranial magnetic stimulation. *Brain Stimul* 6:49–53. <https://doi.org/10.1016/j.brs.2012.01.004>

Tyc F, Boyadjian A (2005) Motor cortex plasticity induced by extensive training revealed by transcranial magnetic stimulation in human. *Eur J Neurosci* 21:259–266. <https://doi.org/10.1111/j.1460-9568.2004.03835.x>

van de Ruit M, Grey MJ (2016) The TMS Map Scales with Increased Stimulation Intensity and Muscle Activation. *Brain Topogr* 29:56–66. <https://doi.org/10.1007/s10548-015-0447-1>

Van De Ruit M, Perenboom MJL, Grey MJ (2015) TMS brain mapping in less than two minutes. *Brain Stimul* 8:231–239. <https://doi.org/10.1016/j.brs.2014.10.020>

Vishram S (2014) *Textbook of Anatomy: Upper Limb and Thorax*, 2nd edn. Reed Elsevier India Private Limited

Wassermann EM, McShane LM, Hallett M, Cohen LG (1992) Noninvasive mapping of muscle representations in human motor cortex. *Electroencephalogr Clin Neurophysiol* 85:1–8. [https://doi.org/10.1016/0168-5597\(92\)90094-R](https://doi.org/10.1016/0168-5597(92)90094-R)

Wilson SA, Thickbroom GW, Mastaglia FL (1993) Transcranial magnetic stimulation mapping of the motor cortex in normal subjects. *J Neurol Sci* 118:134–144. [https://doi.org/10.1016/0022-510X\(93\)90102-5](https://doi.org/10.1016/0022-510X(93)90102-5)

7. Appendix 1

The cortical motor maps were created in the TMSmap software (Novikov et al. 2018). The software uses the coil center coordinates to fit the closest spherical surface in the least square sense and projects them to generate surface in a region called the patch of interest, where a quasi-regular grid is constructed. A spatial filtering is applied to merge stimulation coordinates located closer than 3-mm to compensate for the inherent errors and fluctuations of the neuronavigation system and to avoid strong influence from outliers. The mean coordinates and the median peak-to-peak MEP amplitudes of the merged coordinates are projected on the grid and an interpolation with a smoothly changing function approach is applied to construct the map. The maximal radius of the stimulation site influence on the cortical surface was set to 15 mm according to the approximate full width at half maximum (FWHM) of the electric field distribution on the cortical surface (Nieminen et al. 2015).

The area, volume, and centroid were computed from the cortical motor maps. The map area and volume were computed according to the equations below:

$$\text{Area} = \sum_{i=1}^N \Delta s_i \quad (\text{A1})$$

$$\text{Volume} = \sum_{i=1}^N \text{MEP}_i \cdot \Delta s_i \quad (\text{A2})$$

where N is the number of square grid elements with area Δs_i and MEP_i is the peak-to-peak amplitude. MEP amplitudes smaller than 50 μV were discarded from the area and volume estimates (Groppa et al. 2012). The map area represents the extent of the cortical motor representation and the volume represents the map area weighted by the amplitude of the motor response. The volume is better described as an effective area. Considering a map within a certain area, the height of the map is the MEP amplitude and it represents how strong the muscle's response was to the stimuli applied in that area. Comparing two maps with the same area and different volumes, the extent of that muscle's representation on M1 is equal although the map whose height is higher has stronger muscle recruitment and/or representation. The centroid was calculated as:

$$\text{centroid} = \left(\frac{\sum_{i=1}^N (h_i * s_i * x_i)}{\sum_{i=1}^N (h_i * s_i)}, \frac{\sum_{i=1}^N (h_i * s_i * y_i)}{\sum_{i=1}^N (h_i * s_i)}, \frac{\sum_{i=1}^N (h_i * s_i * z_i)}{\sum_{i=1}^N (h_i * s_i)} \right) \quad (\text{A3})$$

where N is the number of grid elements, h_i is the height of the constructed map above the grid element, s_i is the area and x_i , y_i and z_i are the coordinates of the center of the grid element (Novikov et al. 2018).

The overlap map was constructed considering the area where MEP amplitudes were greater than 50 μV for all the recorded muscles and the map height is the smallest MEP amplitude across all muscles at each grid element. The area, volume, centroid and EMD for the overlap maps were calculated as described above. The size and topography parameters selected to assess the coactivation between adjacent muscles were area and volume OD, and EMD and centroids Euclidean distance, respectively, as described in Methods.